

AUGUST						
S	M	T	W	T	F	S
						1
2	3	4	5	6	7	8
9	10	11	12	13	14	15
16	17	18	19	20	21	22
23	24	25	26	27	28	29
30	31					

SEPTEMBER						
S	M	T	W	T	F	S
		1	2	3	4	5
6	7	8	9	10	11	12
13	14	15	16	17	18	19
20	21	22	23	24	25	26
27	28	29	30			

OCTOBER						
S	M	T	W	T	F	S
				1	2	3
4	5	6	7	8	9	10
11	12	13	14	15	16	17
18	19	20	21	22	23	24
25	26	27	28	29	30	31

NOVEMBER						
S	M	T	W	T	F	S
1	2	3	4	5	6	7
8	9	10	11	12	13	14
15	16	17	18	19	20	21
22	23	24	25	26	27	28
29	30					

TRAIN UP A CHILD IN THE WAY HE SHOULD GO, AND WHEN HE IS OLD HE WILL NOT DEPART FROM IT.

PROVERBS 22:6

DECEMBER						
S	M	T	W	T	F	S
		1	2	3	4	5
6	7	8	9	10	11	12
13	14	15	16	17	18	19
20	21	22	23	24	25	26
27	28	29	30	31		

JANUARY						
S	M	T	W	T	F	S
					1	2
3	4	5	6	7	8	9
10	11	12	13	14	15	16
17	18	19	20	21	22	23
24	25	26	27	28	29	30
31						

FEBRUARY						
S	M	T	W	T	F	S
	1	2	3	4	5	6
7	8	9	10	11	12	13
14	15	16	17	18	19	20
21	22	23	24	25	26	27
28						

MARCH						
S	M	T	W	T	F	S
	1	2	3	4	5	6
7	8	9	10	11	12	13
14	15	16	17	18	19	20
21	22	23	24	25	26	27
28	29	30	31			

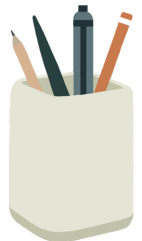
APRIL						
S	M	T	W	T	F	S
				1	2	3
4	5	6	7	8	9	10
11	12	13	14	15	16	17
18	19	20	21	22	23	24
25	26	27	28	29	30	

MAY						
S	M	T	W	T	F	S
						1
2	3	4	5	6	7	8
9	10	11	12	13	14	15
16	17	18	19	20	21	22
23	24	25	26	27	28	29
30	31					

JUNE						
S	M	T	W	T	F	S
		1	2	3	4	5
6	7	8	9	10	11	12
13	14	15	16	17	18	19
20	21	22	23	24	25	26
27	28	29	30			

COLOR KEY

- SPECIAL ACTIVITY
- EARLY DISMISSAL (HALF DAY)
- ASSESSMENT TESTING
- FIRST DAY/LAST DAY
- PARENT/TEACHER CONFERENCES
- TEACHER APPRECIATION DAY
- NO SCHOOL/HOLIDAYS
- TEACHER-IN-SERVICE-DAY



TERM 1: 08/26 - 11/30

REPORT CARDS GO HOME 12/11

- AUG 17** OFFICE OPENS
- AUG 24** MEET-THE TEACHER ICECREAM SOCIAL*
- AUG 26** FIRST DAY OF SCHOOL
- SEP 7** LABOR DAY
- SEP 11** OPEN HOUSE*
- SEP 28** PICTURE DAY*
- OCT 2-5** FALL BREAK (NO SCHOOL)
- OCT 19** PICTURE RETAKE DAY*
- OCT 28** TEACHER-IN-SERVICE DAY (NO SCHOOL)
- OCT 29-30** PARENT/TEACHER CONFERENCES
- NOV 11** VETERAN'S DAY
- NOV 25** EARLY DISMISSAL (HALF DAY)
- NOV 26-27** THANKSGIVING BREAK

TERM 2: 12/01 - 02/26

REPORT CARDS GO HOME 03/12

- DEC 21-JAN 1** WINTER BREAK
- JAN 18** MLK DAY
- FEB 12** MID WINTER BREAK (NO SCHOOL)
- FEB 15** PRESIDENT'S DAY/SNOW MAKE-UP DAY

TERM 3: 03/01 - 05/28

REPORT CARDS GO HOME 06/04

- MAR 3** TEACHER-IN-SERVICE DAY (NO SCHOOL)
- MAR 4-5** PARENT/TEACHER CONFERENCES
- MAR 26-APR 9** SPRING BREAK
- APR 26-30** ASSESSMENT TESTING*
- MAY 3** TERM BREAK (NO SCHOOL)
- MAY 4** TEACHER APPRECIATION DAY*
- MAY 24** KINDERGARTEN GRADUATION*
- MAY 28** 8TH GRADE GRADUATION*
- MAY 31** MEMORIAL DAY
- JUNE 4** LAST DAY OF SCHOOL (HALF DAY)